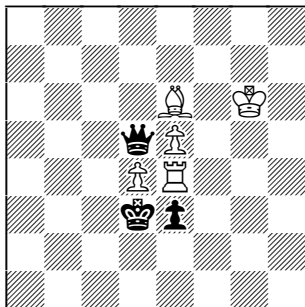
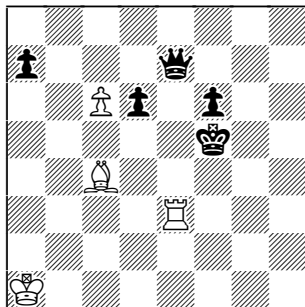


Hans Peter Rehm
idee & form 2010



pser-h#6 (5+3) C+

Hans Peter Rehm
Harmonie 2010



pser-h#6 2 solutions (4+5) C+

1st Diagram

1.Qxe5 2.Qg3+ Kh5! 3.Qh3+ Rh4 4.Qf3+ Bg4 5.Qd5+ Kg6! 6.Ke4 Be2#

bQ rundlauf, wK switchback, white battery formation.

2nd Diagram

1.Qg7 2.Qg1+ Re1! 3.Qd4+ Ka2 4.Qf2+ Be2! 5.Ke6 6.Qf5 Bc4#

1.Qb7 2.Qa6+ Ba2! 3.Qf1+ Kb2 4.Qb5+ Rb3! 5.Ke6 6.Qf5 Re3#

Mutual white Indian withdrawals for double-check formation. Effortless control of bQ movements!