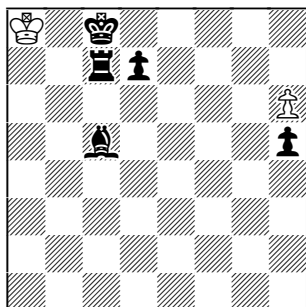
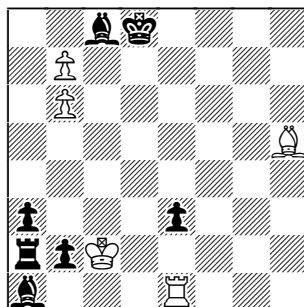


Valery Liskovets  
MatPlus Forum 2010

Dan Meinking  
MatPlus Forum 2010



legal-pscr-h#5 (2+5) C-



pscr-hxz6 (5+7) C+

**NOTE:** CapZug notation changed from "x=" to "xz"! See post of 04/10/2011.

### 1st Diagram

1.Ba7 2.Rc5 3.Rg5 h7! (White has no prior move, so must be on-move!) 4.Rc5 5.Rc7 h8=Q/R#

The stipulation, **legal-pscr-\***, indicates that after each series-move, the position must be examined for legality. After Black plays 3.Rg5, we can easily see that neither the wK nor wP could have had the last move. That event invokes the **legal-parry** rule, and allows White to interject 3...h7!

### 2nd Diagram

1.Bg4 2.Bd1+ Bxd1! 3.e2 4.exd1B+! Kb1 5.Bg4 6.Bc8 bxc8B! xz [double Phoenix theme]

In the final position, the aim of **CapZug** has been achieved because: (1) Black is not in-check; and (2) Black would be compelled to capture (if he were to move again). He's in Capture-Zugzwang. :-)