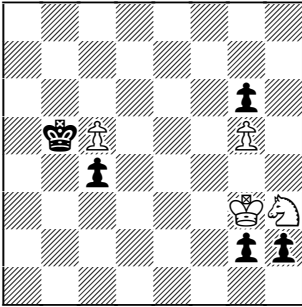
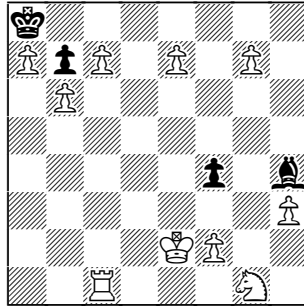


DM, *idee & form* 2010  
dedicated to Thomas Maeder

DM, *StrateGems* 2010 (c)  
for Rasa



pscr-h#9 2 solutions (4+5) C+



phser-!=14 (10+4) C-

### **1st Diagram:**

1.h1S+ Kf3 2.g1S+ Ke4 3.Sg3+ Ke5 4.Sf3+ Kd6 5.Sf5+ Kd7 6.Se5+ Ke8 7.Kc6 8.Kd5 9.Ke6 Sf4#  
1.g1Q+ Kf3 2.Qa1 3.Qa8+! c6 4.h1Q+ Ke3 5.Qxh3+ Kd2 6.Qd7+ cxd7 7.c3+ Kxc3 8.Qc8+ dxc8Q 9.Ka4 Qa6#

I composed this problem with the 1st solution in mind. And, in fact, when I sent this to Thomas for testing (my PC is too slow), I listed only 1 solution. But... *Popeye* found the 2nd line!

When Thomas returned this "cook", I was disappointed. On closer examination, however, I liked it and decided to retain it! Plus, the 2nd line makes the dedication even more appropriate. :-)

### **2nd Diagram:**

1.c8B 2.Bxb7+ Kxb7 3.a8B+ Kxb6 4.Bh1! 5.Kf3! 6.Rc6+ Kxc6 7.e8B+ Kd5 8.Bc6+ Kc4 9.g8B+ Kd3  
10.Bc4+ Kc2 11.Bf1 12.Kd2 13.Bcg2 14.f3 !=

The (c) above the diagram indicates this is a correction of the originally published setting (Rc1=>c2), which was **cooked by C. C. Frankiss** using logic similar to the intent:

1.c8B 2.Bxb7+ Kxb7 3.a8B+ Kxb6 4.Bg2 5.Bf1 6.Rb2+ Kc6 7.e8B+ Kd5 8.Bc6+ Kc4 9.g8B+ Kc3! 10.Rc2+ Kxc2 etc.

This clever "workaround" is effective because the wR can return exactly to c2 (with check) and be captured there. That, in turn, alleviates the need for the wK's switchback route. Starting wRc2=>c1 (diagram), should fix that. :-)