

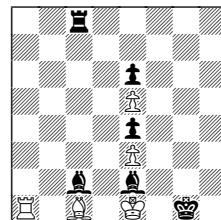
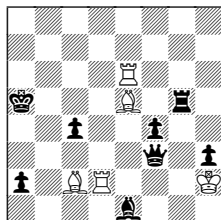
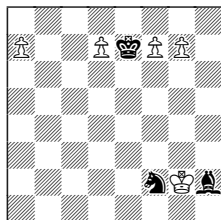
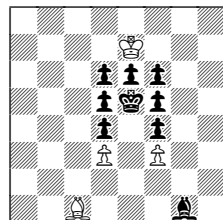
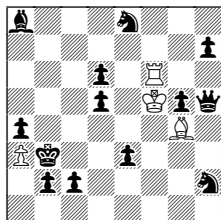
**H1:** 1st Prize, *GCQCT*  
V. Crisan & I. Murarasu

**H2:** 2nd Prize, *GCQCT*  
Ralf Krätschmer

**H3:** 3rd Prize, *GCQCT*  
Ion Murarasu

**H4:** 4th Prize, *GCQCT*  
Ricardo M. Vieira

**H5:** 5th Prize, *GCQCT*  
Bojan Basic



psr-h#6 2.1... (4+13)

psr-h#31 (4+9)

psr-s#10 (5+3)

psr-h#4 2.1... (5+8)

phser-00 in 27 (5+6)

Solutions from the Good Companions Quick-Composing Tourney 2010 (*GCQCT*) Awards (Judge: Dan Meinking)

**H1:** The Queen and Knights work in tandem, sacrificing themselves to realign the Bishop and Rook into reciprocal masked battery formations. And notice how the precise Knight placements cause accurate Qf7-d7 and Qh3-f1 routes, giving rise to switchbacks on Black's fifth. Even the departing Pawns are woven perfectly into the matrix. A constuctional triumph! **1.Qf7 2.Qd7+ Re6 3.Sg7+ Kf6 4.Sh5+ Bxh5 5.Qf7+! Bxf7 6.d4 Rxe3#; 1.Qh3 2.Qf1+ Bf3 3. Sg4 4.Sh6+ Rxh6 5.Qh3+! Rxh3 6.e2 Bxd5#**

**H2:** This CPT gem gets an "A" for artistry! First, shift the wK to b4: **1-5.Bf2-h4-g5-h6-f8+ Kd8 6-11.Be7-d8-c7-b8-a7-b6+ Kb4**; next, parry the wB to d2: **12-17.Bd8-e7-f8-h6-g5-h4 18.Be1+ Bd2**; now setup the fork on c3: **19-24.Bh4-g5-h6-f8-e7-d8 25.Ba5+ Ka3 26.Bb4+ Kb2 27.Bc3+ Bxc3**; and the climax: **28.dxc3+ Kb1!** (28...Kxc3? 29.??? d4#; 28...Kb3? 30.c1S+ Kc3 31.??? d4#, a zugged Knight!) **29.c2+ Kb2 30.c1B+!** (Phoenix) **Kc3 31.Ba3** (tempo) **d4#**. A long story with a happy ending.

**H3:** From this humble diagram springs an impressive promotion array (BQQQ). White coerces Bh2-d6 and masks it with Ke5 (Indian), freeing up the mating square. Then the white King shifts to activate sweeping blocks, including another critical move. One last check releases the battery model-mate. So much from so little! **1.a8B 2.Bc6 3.f8Q+ Ke6 4.d8Q 5.Qdd6+ Bxd6 6.g8Q+ Ke5 7.Kh2 8.Qg1 9.Bg2 10.Qf6+ Kxf6#**.

**H4:** I would never have imagined a 4-move helper gaining Prize status, but this one is exceptional. The withdrawal keys relinquish control of h3 and h1 in turn so that, after an interim check-and-parry, the Queen can fire from a distance. White's cross-check interposes setup lovely ODT pin-models. Take note of the W3 line-opening effects, which produce natural dual-avoidance as outlined in the solutions. A treasure! **1.Qb7 2.Rg2+ Kxh3! 3.Qb3+ Bc3+ 4.Qb4 Rd5#** (2...Kh1? 3.R~+ Rd5+ 4.Qb5 Bc3??); **1.Qb3 2.Bg3+ Kh1! 3.Qb7+ Rd5+ 4.Qb5 Bc3#** (2...Kxh3? 3.B~+ Bb3+ 4.Qb4 Rd5??).

**H5:** The bK must be CPTed to the Q-side ASAP to oust the OCB duo! The push to b6 for starters: **1-3.Ba3-e7-h4 4.Bf2+ Kh2 5-13.Bg1-h2-g3-h4-g5-f6-g7-f8-e7+ Kc7 14.Bd6+ Kb6**; next, a battery-plus-parry: **15-16.Bb4-a5+ Ka7 17.Bc7+ Ba6**; then another: **18-20.Bb8-c7-b6+ Kb4 21-23.Bd4-b2-a3+ Ka5 24.Bc5+ Ba4**; and a pair of shutoffs to boot: **25.Bb6+ Kb4 26.Bc5+ Kb3 27.0-0-0**. With such a picturesque setting and robust theme, the promoted bB is quite palatable.