

Parry Series: Flashback

Over the past year or so I've been actively promoting, and tracking the progress of, [Parry Series](#). Petko Petkov remarked in a recent article: "*Parry Series is an original invention which does copy old ideas.*" It's been 'welcomed with open arms' by the chess problem world, so that appeared to be the case. *Au contraire!*

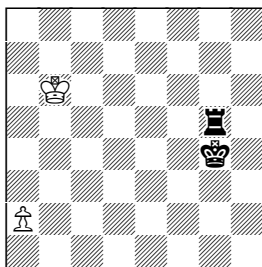
Flash #1: On July 18th I started a [new thread](#) on *MatPlus Forum* (unrelated to Parry Series), and was surprised to find Kevin Begley's post of July 21st (time=23:46) with the first diagram (below) from *WinChloe* database. Kevin opined: "*This is **not a pser-s=14** -- it is a fairy condition, which **anticipates parry-movers** (by more than 40 years)! In fact, the *WinChloe* db stores **pser-direct**-, **pser-self**-, and **pser-PGs** under the very same fairy condition (used by Kniest).*"

Obviously, Albert Kniest (not to be confused with the other Kniest!) was ahead-of-his-time with this "*Les Noirs ne jouent qu s'ils sont en échec*" idea, which means roughly "*Black plays only when in check*". It's clearly a partial anticipation of 'parry-movers'. The key difference with Parry Series (and an important one) is that check is not required on the last move. Of course, I expressed interest in seeing more examples.

Flash #2: Geoff Foster was kind enough to search the *WinChloe* database for both the "*Les Noirs...*" (black) and "*Les Blanc...*" (white) variants of this condition. On Cornel Pacurar's excellent [private series forum](#), Geoff noted that the second diagram (below) was, alas, the only other Kniest example. But that one, too, has historical significance, as it mostly anticipates the third diagram (below) by George Sphicas.

We conclude what we already knew: "Nothing is new under the Sun"! -- Dan Meinking / Cincinnati / 25-July 2010

Albert H. Kniest / *Frankfurter Notizen* 1966

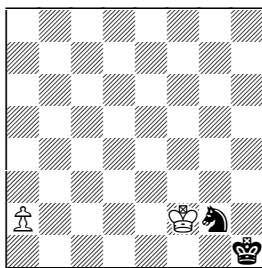


s=14 (2+2)

"Les Noirs ne jouent que s'ils sont en échec"
(Black plays only when in check)

5.a8Q 6.Qd5 7.Kc5 ... 11.Kg2 12. Qf3+ Kh4+ 13.Kh1 14.Qh3+ Kxh3=

Albert H. Kniest / *Frankfurter Notizen* 1966

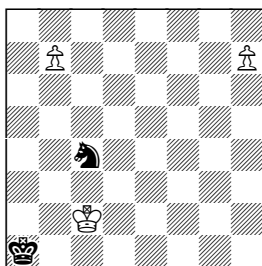


s=12 (2+2)

"Les Noirs ne jouent que s'ils sont en échec"
(Black plays only when in check)

5.a8Q 6.Qh8+ Sh4 7.Qa1+ Kh2 8.Qg1+ Kh3 9.Qd1 11.Kh1 12.Qf3+ Sxf3=

George P. Sphicas / *StrateGems* 2009



pser-s=10 (3+2)

Published as **PS10** in the SG47 article, "*Parry Series: A New Frontier*"

1.b8Q 2.Qb2+ Sxb2 3.h8Q 4.Qa8+ Sa4 5.Qh1+ Ka2 6.Qb1+ Ka3 7.Qe1 9.Ka1 10.Qc3+ Sxc3=